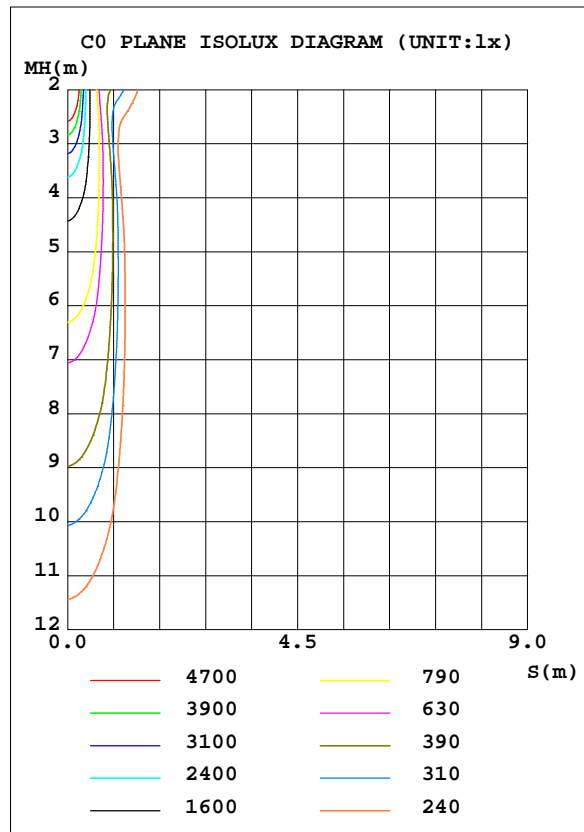
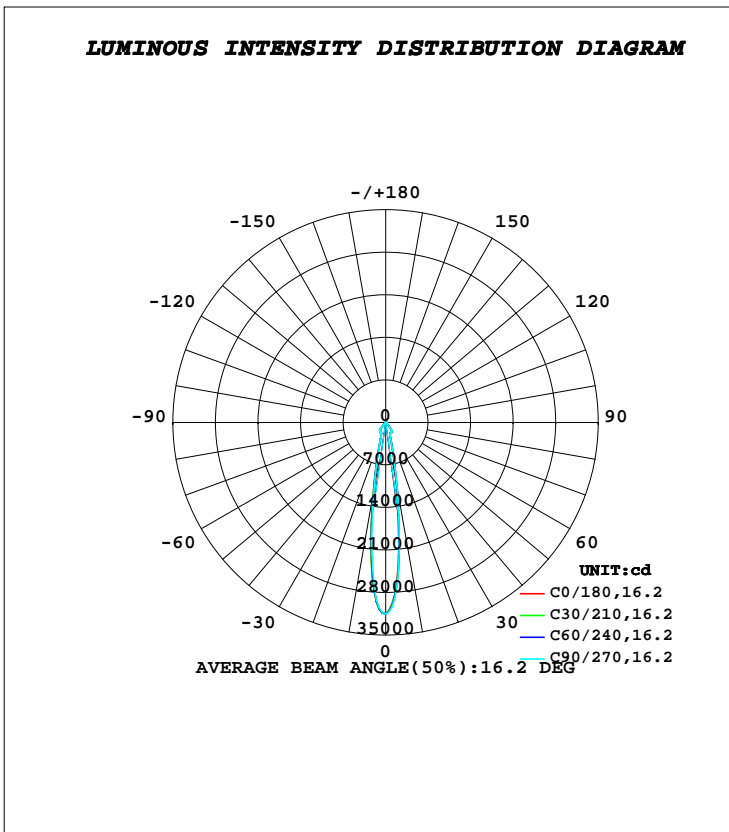


LUMINAIRE PHOTOMETRIC TEST REPORT

Test:U:221.70V I:0.2320A P:49.900W PF:0.9710 Freq:50.00Hz		
Lamp Flux:5621.73x1 lm		
Name: NS10-φ214mm-50W	Type: LED	
MFR.: Lumega Group	DIM.: D214*H110mm	
	SUR.: D180mm	

DATA OF LAMP		PHOTOMETRIC DATA Eff: 112.66 lm/W			
MODEL		I _{max} (cd)	31510	S/MH(C0/180)	0.27
NOMINAL POWER(W)	50	LOR(%)	100.0	S/MH(C90/270)	0.28
RATED VOLTAGE(V)	220	TOTAL FLUX(lm)	5621.7	η UP, DN(C0-180)	1.3, 47.8
NOMINAL FLUX(lm)	5621.73	CIE CLASS	DIRECT	η UP, DN(C180-360)	1.5, 49.3
LAMPS INSIDE	1	η up(%)	2.8	CIBSE SHR NOM	0.00
TEST VOLTAGE(V)	220	η down(%)	97.2	CIBSE SHR MAX	0.30



C Range: 0 - 360DEG
C Interval: 30.0DEG
Test Speed: HIGH
Temperature:25.3DEG
Operators:DAMIN
Test Date:2022-05-04

γ Range: 0 - 180DEG
γ Interval: 1.0DEG
Test System:EVERFINE GO-2000A_V1 SYSTEM V2.00.443
Humidity:65.0%
Test Distance:8.000m [K=0.7063]
Remarks:

ZONAL FLUX DIAGRAM

ZONAL FLUX DIAGRAM:

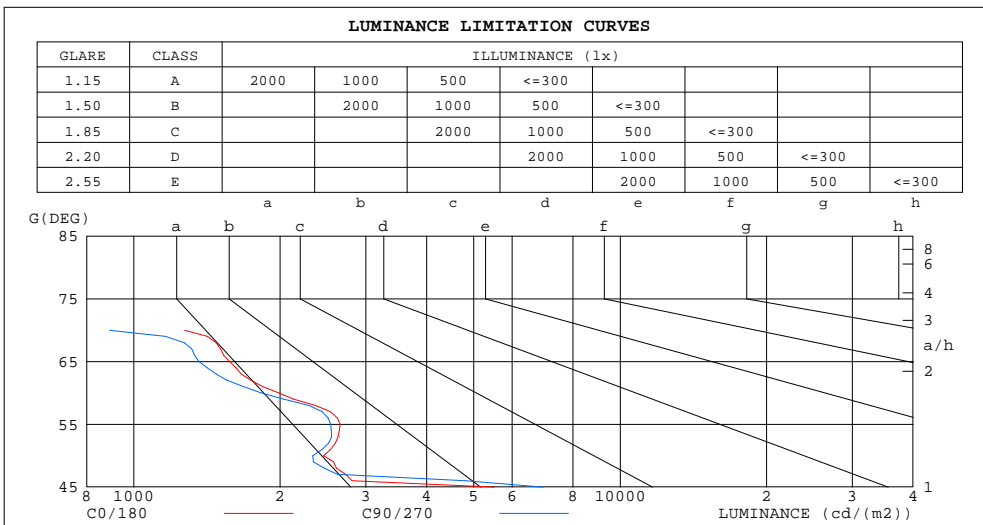
γ	C0	C45	C90	C135	C180	C225	C270	C315	γ	Φ zone	Φ total	%lum,lamp
10	1020	1051	1092	1162	1212	1168	1103	1058	0- 10	1878	1878	33.4,33.4
20	218.3	216.9	218.8	226.9	234.3	232.7	228.3	223.8	10- 20	1328	3206	57,57
30	181.6	180.9	181.1	183.0	184.9	184.7	183.9	182.9	20- 30	907.7	4114	73.2,73.2
40	112.0	111.1	113.0	120.4	126.7	123.6	118.2	114.8	30- 40	1033	5147	91.6,91.6
50	3.948	3.774	3.751	3.999	4.230	4.073	3.872	3.861	40- 50	253.6	5401	96.1,96.1
60	2.488	2.294	2.288	2.609	2.928	2.865	2.707	2.597	50- 60	32.42	5433	96.6,96.6
70	1.088	0.8109	0.7626	1.115	1.466	1.338	1.128	1.075	60- 70	17.43	5451	97,97
80	0.1668	0.0956	0.1649	0.4794	0.7952	0.8712	0.8062	0.5588	70- 80	5.069	5456	97,97
90	0.2253	0.1362	0.2208	0.6089	0.9975	1.084	0.9976	0.6972	80- 90	6.214	5462	97.2,97.2
100	0.3976	0.3070	0.3825	0.7482	1.115	1.193	1.111	0.8331	90-100	7.454	5469	97.3,97.3
110	0.8700	0.7832	0.8420	1.154	1.469	1.541	1.477	1.242	100-110	9.873	5479	97.5,97.5
120	1.577	1.470	1.538	1.908	2.283	2.363	2.282	2.008	110-120	15.21	5495	97.7,97.7
130	2.396	2.285	2.344	2.696	3.053	3.127	3.049	2.795	120-130	20.73	5515	98.1,98.1
140	3.891	3.797	3.797	3.957	4.127	4.151	4.114	4.026	130-140	25.32	5541	98.6,98.6
150	5.390	5.330	5.344	5.485	5.627	5.638	5.595	5.512	140-150	29.63	5570	99.1,99.1
160	6.435	6.457	6.527	6.687	6.835	6.861	6.811	6.662	150-160	28.21	5598	99.6,99.6
170	5.250	5.429	5.603	5.788	5.934	5.992	5.936	5.670	160-170	18.50	5617	99.9,99.9
180	4.390	4.338	4.321	4.367	4.410	4.364	4.317	4.335	170-180	4.833	5622	100,100
DEG	LUMINOUS INTENSITY:×10cd									UNIT: lm		

C Range: 0 - 360DEG
C Interval: 30.0DEG
Test Speed: HIGH
Temperature:25.3DEG
Operators:DAMIN
Test Date:2022-05-04

γ Range: 0 - 180DEG
 γ Interval: 1.0DEG
Test System:EVERFINE GO-2000A_V1 SYSTEM V2.00.443
Humidity:65.0%
Test Distance:8.000m [K=0.7063]
Remarks:

LUMINANCE LIMITATION CURVES

Test:U:221.70V I:0.2320A P:49.900W PF:0.9710 Freq:50.00Hz		
Lamp Flux:5621.73x1 lm		
Name: NS10-φ214mm-50W	Type: LED	
MFR.: Lumega Group	DIM.: D214*H110mm	
	SUR.: D180mm	



LUMINANCE cd/(m2)		
G (DEG)	C0/180	C90/270
85	892	879
80	384	380
75	222	222
70	1272	892
65	1576	1362
60	1990	1830
55	2656	2541
50	2457	2334
45	5510	6936

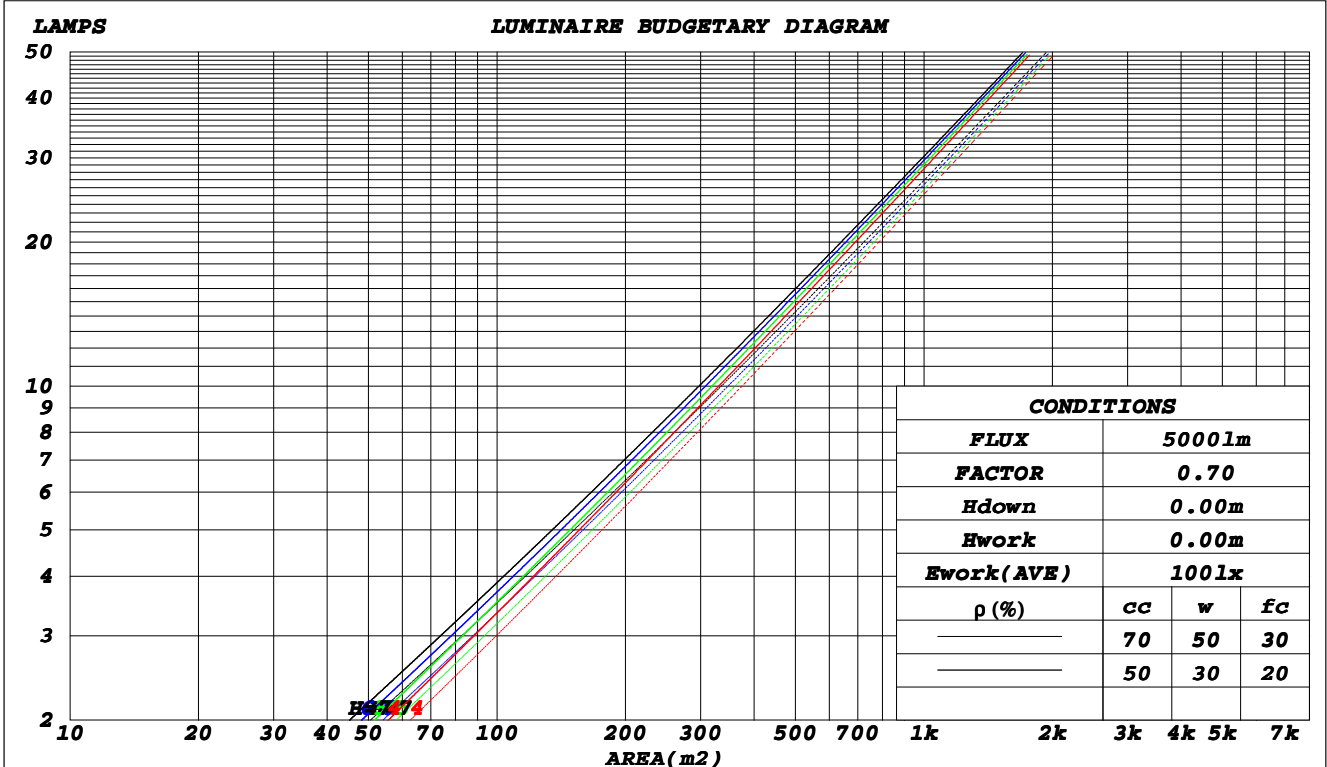
C Range: 0 - 360DEG
C Interval: 30.0DEG
Test Speed: HIGH
Temperature: 25.3DEG
Operators: DAMIN
Test Date: 2022-05-04

γ Range: 0 - 180DEG
γ Interval: 1.0DEG
Test System: EVERFINE GO-2000A_V1 SYSTEM V2.00.443
Humidity: 65.0%
Test Distance: 8.000m [K=0.7063]
Remarks:

CU AND LUMINAIRE BUDGETARY ESTIMATE DIAGRAM

Test:U:221.70V I:0.2320A P:49.900W PF:0.9710 Freq:50.00Hz		
Lamp Flux:5621.73x1 lm		
Name: NS10-φ214mm-50W	Type: LED	
MFR.: Lumega Group	DIM.: D214*H110mm	
	SUR.: D180mm	

ρcc	80%			70%			50%			30%			10%			0
ρw	50%	30%	10%	50%	30%	10%	50%	30%	10%	50%	30%	10%	50%	30%	10%	0
ρfc	20%			20%			20%			20%			20%			0
RCR	RCR:Room Cavity Ratio						Coefficients of Utilization(CU)									
0.0	1.18	1.18	1.18	1.15	1.15	1.15	1.10	1.10	1.10	1.04	1.04	1.04	.99	.99	.99	.97
1.0	1.11	1.09	1.07	1.09	1.07	1.05	1.04	1.03	1.01	.99	.99	.98	.96	.95	.94	.92
2.0	1.05	1.01	.98	1.03	.99	.97	.99	.96	.94	.96	.94	.92	.93	.91	.90	.88
3.0	.99	.94	.91	.97	.93	.90	.94	.91	.88	.92	.89	.87	.89	.87	.85	.83
4.0	.94	.89	.85	.92	.88	.85	.90	.86	.83	.88	.85	.82	.86	.83	.81	.80
5.0	.89	.84	.81	.88	.83	.80	.86	.82	.79	.84	.81	.78	.82	.80	.77	.76
6.0	.85	.80	.76	.84	.79	.76	.82	.78	.75	.81	.77	.75	.79	.76	.74	.73
7.0	.81	.76	.73	.81	.76	.73	.79	.75	.72	.78	.74	.71	.77	.73	.71	.70
8.0	.78	.73	.70	.77	.73	.69	.76	.72	.69	.75	.71	.69	.74	.71	.68	.67
9.0	.75	.70	.67	.75	.70	.67	.73	.69	.66	.72	.69	.66	.71	.68	.66	.65
10.0	.72	.68	.64	.72	.67	.64	.71	.67	.64	.70	.66	.64	.69	.66	.63	.62



C Range: 0 - 360DEG
 C Interval: 30.0DEG
 Test Speed: HIGH
 Temperature:25.3DEG
 Operators:DAMIN
 Test Date:2022-05-04

γ Range: 0 - 180DEG
 γ Interval: 1.0DEG
 Test System:EVERFINE GO-2000A_V1 SYSTEM V2.00.443
 Humidity:65.0%
 Test Distance:8.000m [K=0.7063]
 Remarks:

WEC AND CCEC

Test:U:221.70V I:0.2320A P:49.900W PF:0.9710 Freq:50.00Hz		
Lamp Flux:5621.73x1 lm		
Name: NS10-φ214mm-50W	Type: LED	
MFR.: Lumega Group	DIM.: D214*H110mm	
	SUR.: D180mm	

ρ _{cc}	80%			70%			50%			30%			10%			0
ρ _w	50%	30%	10%	50%	30%	10%	50%	30%	10%	50%	30%	10%	50%	30%	10%	0
ρ _{fc}	20%			20%			20%			20%			20%			0
RCR	RCR:Room Cavity Ratio						Wall Exitance Coefficients(WEC)									
0.0																
1.0	.159	.090	.029	.151	.086	.027	.137	.079	.025	.124	.072	.023	.112	.065	.021	
2.0	.150	.082	.025	.143	.079	.024	.131	.073	.023	.120	.068	.021	.110	.062	.020	
3.0	.141	.075	.022	.136	.073	.022	.125	.068	.021	.116	.064	.020	.107	.059	.018	
4.0	.133	.069	.020	.128	.067	.020	.120	.063	.019	.112	.060	.018	.104	.056	.017	
5.0	.126	.064	.019	.122	.063	.018	.114	.059	.018	.107	.056	.017	.100	.054	.016	
6.0	.119	.060	.017	.116	.059	.017	.109	.056	.016	.103	.053	.016	.097	.051	.015	
7.0	.113	.056	.016	.110	.055	.016	.104	.053	.015	.099	.051	.015	.093	.049	.014	
8.0	.108	.053	.015	.105	.052	.015	.100	.050	.014	.095	.048	.014	.090	.046	.013	
9.0	.103	.050	.014	.101	.049	.014	.096	.047	.013	.091	.046	.013	.087	.044	.013	
10.0	.098	.047	.013	.096	.046	.013	.092	.045	.013	.088	.044	.012	.084	.042	.012	

ρ _{cc}	80%			70%			50%			30%			10%			0
ρ _w	50%	30%	10%	50%	30%	10%	50%	30%	10%	50%	30%	10%	50%	30%	10%	0
ρ _{fc}	20%			20%			20%			20%			20%			0
RCR	RCR:Room Cavity Ratio						Ceiling Cavity Exitance Coefficients(CCEC)									
0.0	.212	.212	.212	.181	.181	.181	.124	.124	.124	.071	.071	.071	.023	.023	.023	
1.0	.192	.179	.168	.164	.154	.145	.112	.106	.100	.065	.061	.058	.021	.020	.019	
2.0	.175	.155	.137	.150	.133	.119	.103	.092	.083	.059	.054	.048	.019	.017	.016	
3.0	.162	.136	.115	.139	.117	.099	.095	.081	.070	.055	.047	.041	.018	.015	.013	
4.0	.150	.121	.098	.129	.104	.085	.089	.073	.060	.051	.043	.035	.017	.014	.012	
5.0	.141	.109	.085	.121	.094	.074	.083	.066	.052	.048	.039	.031	.016	.013	.010	
6.0	.133	.099	.075	.114	.086	.065	.079	.060	.046	.046	.035	.027	.015	.012	.009	
7.0	.126	.091	.067	.108	.079	.059	.075	.055	.042	.043	.033	.025	.014	.011	.008	
8.0	.119	.085	.061	.103	.074	.053	.071	.052	.038	.041	.030	.022	.013	.010	.007	
9.0	.114	.079	.056	.098	.069	.049	.068	.048	.035	.040	.029	.021	.013	.009	.007	
10.0	.109	.075	.052	.094	.065	.045	.065	.046	.032	.038	.027	.019	.012	.009	.006	

C Range: 0 - 360DEG
C Interval: 30.0DEG
Test Speed: HIGH
Temperature:25.3DEG
Operators:DAMIN
Test Date:2022-05-04

γ Range: 0 - 180DEG
γ Interval: 1.0DEG
Test System:EVERFINE GO-2000A_V1 SYSTEM V2.00.443
Humidity:65.0%
Test Distance:8.000m [K=0.7063]
Remarks:

UGR(Unified Glare Rating) Table

Test:U:221.70V I:0.2320A P:49.900W PF:0.9710 Freq:50.00Hz		
Lamp Flux:5621.73x1 lm		
Name: NS10-φ214mm-50W	Type: LED	
MFR.: Lumega Group	DIM.: D214*H110mm	
	SUR.: D180mm	

ceiling/cavity	0.7	0.7	0.5	0.5	0.3	0.7	0.7	0.5	0.5	0.3
walls	0.5	0.3	0.5	0.3	0.3	0.5	0.3	0.5	0.3	0.3
working plane	0.2	0.2	0.2	0.2	0.2	0.2	0.2	0.2	0.2	0.2
Room dimensions	Viewed crosswise					Viewed endwise				
x = 2H y = 2H	18.3	19.1	18.5	19.3	19.5	18.3	19.1	18.5	19.3	19.5
3H	18.1	18.8	18.4	19.1	19.3	18.1	18.8	18.4	19.1	19.3
4H	18.0	18.7	18.4	19.0	19.2	18.0	18.7	18.3	19.0	19.2
6H	17.9	18.6	18.3	18.9	19.2	17.9	18.6	18.3	18.9	19.2
8H	17.9	18.5	18.2	18.8	19.1	17.9	18.5	18.2	18.8	19.1
12H	17.9	18.4	18.2	18.8	19.1	17.8	18.4	18.2	18.8	19.1
4H 2H	18.0	18.7	18.3	19.0	19.2	18.0	18.7	18.3	19.0	19.2
3H	17.9	18.5	18.2	18.8	19.1	17.9	18.5	18.2	18.8	19.1
4H	17.8	18.3	18.1	18.6	19.0	17.8	18.3	18.1	18.6	19.0
6H	17.7	18.1	18.1	18.5	18.9	17.7	18.1	18.1	18.5	18.9
8H	17.6	18.0	18.0	18.4	18.9	17.6	18.0	18.0	18.4	18.9
12H	17.5	17.9	18.0	18.4	18.8	17.5	17.9	18.0	18.4	18.8
8H 4H	17.6	18.0	18.0	18.4	18.9	17.6	18.0	18.0	18.4	18.9
6H	17.5	17.8	18.0	18.3	18.8	17.5	17.8	18.0	18.3	18.8
8H	17.4	17.7	17.9	18.2	18.7	17.4	17.7	17.9	18.2	18.7
12H	17.4	17.6	17.9	18.1	18.7	17.4	17.6	17.9	18.1	18.7
12H 4H	17.5	17.9	18.0	18.4	18.8	17.5	17.9	18.0	18.4	18.8
6H	17.4	17.7	17.9	18.2	18.7	17.4	17.7	17.9	18.2	18.7
8H	17.4	17.6	17.9	18.1	18.7	17.4	17.6	17.9	18.1	18.6
Variations with the observer position at spacings(CIE Pub.117):										
S = 1.0H	+ 3.2 / -14.7					+ 3.2 / -15.0				
1.5H	+ 6.0 / -14.4					+ 6.0 / -14.8				
2.0H	+ 4.2 / - 2.1					+ 5.4 / - 2.8				

CIE Pub.117, 5622 lm Total Lamp Luminous Flux Corrected (8log(F/F0) = 6.0)
 Area: 0.025 m2

C Range: 0 - 360DEG
C Interval: 30.0DEG
Test Speed: HIGH
Temperature:25.3DEG
Operators:DAMIN
Test Date:2022-05-04

γ Range: 0 - 180DEG
γ Interval: 1.0DEG
Test System:EVERFINE GO-2000A_V1 SYSTEM V2.00.443
Humidity:65.0%
Test Distance:8.000m [K=0.7063]
Remarks:

UTILIZATION FACTORS TABLE

Test:U:221.70V I:0.2320A P:49.900W PF:0.9710 Freq:50.00Hz		
Lamp Flux:5621.73x1 lm		
Name: NS10-φ214mm-50W	Type: LED	
MFR.: Lumega Group	DIM.: D214*H110mm	
	SUR.: D180mm	

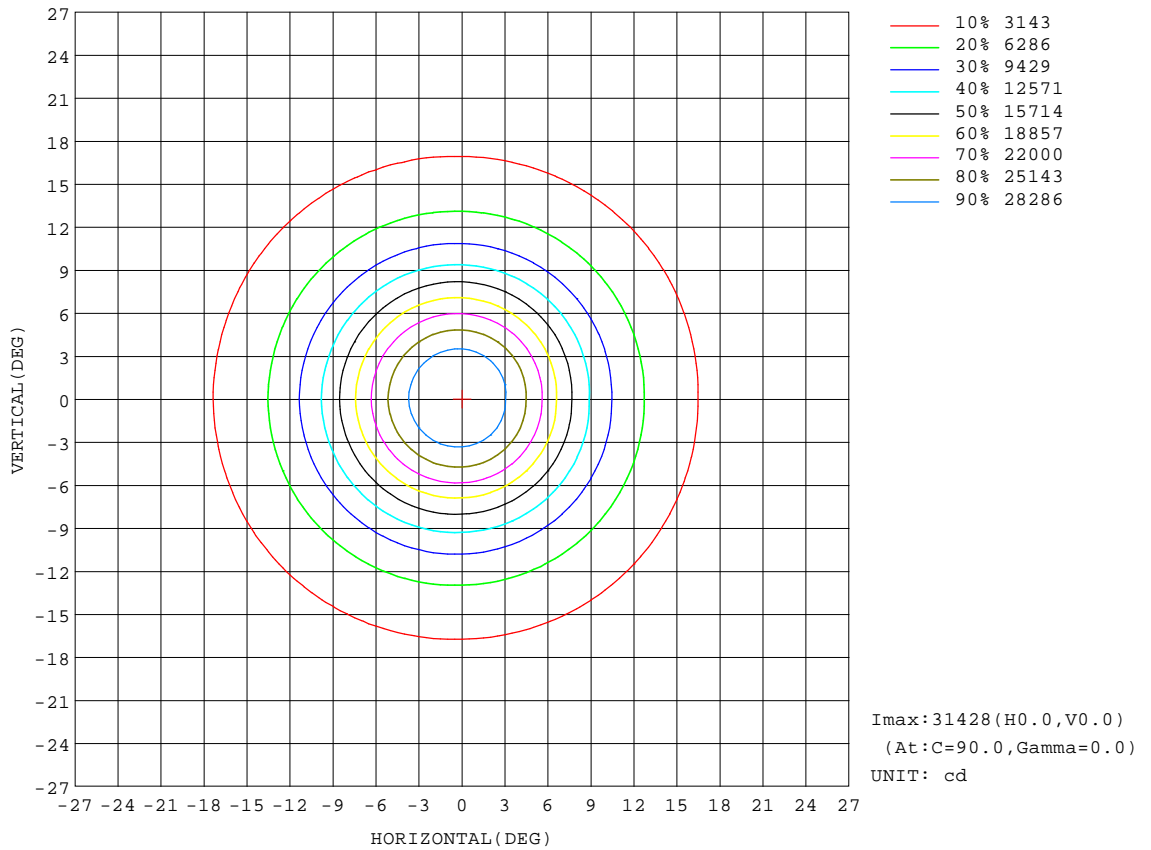
REFLECTANCE										
Ceiling	0.8	0.8	0.8	0.7	0.7	0.7	0.5	0.5	0.5	0
Walls	0.7	0.5	0.3	0.7	0.5	0.3	0.7	0.5	0.3	0
Working plane	0.2	0.2	0.2	0.2	0.2	0.2	0.2	0.2	0.2	0
ROOM INDEX	UTILIZATION FACTORS(PERCENT) $k(RI) \times RCR = 5$									
k = 0.60	86	80	76	86	80	76	85	79	76	72
0.80	94	88	84	93	87	84	92	87	83	80
1.00	98	93	89	97	92	89	95	92	88	84
1.25	102	97	93	101	96	93	99	95	92	87
1.50	105	100	97	104	99	96	101	97	95	90
2.00	108	103	100	106	102	99	103	100	97	92
2.50	109	105	102	107	104	101	104	101	99	93
3.00	111	107	105	109	106	103	105	103	101	94
4.00	113	110	108	111	108	106	107	105	103	95
5.00	114	112	110	112	110	108	107	106	105	96
ROOM INDEX	UF(total)									Direct
According to DIN EN 13032-2 2004			Suspended					SHRNOM = 1.25		

C Range: 0 - 360DEG
C Interval: 30.0DEG
Test Speed: HIGH
Temperature:25.3DEG
Operators:DAMIN
Test Date:2022-05-04

γ Range: 0 - 180DEG
γ Interval: 1.0DEG
Test System:EVERFINE GO-2000A_V1 SYSTEM V2.00.443
Humidity:65.0%
Test Distance:8.000m [K=0.7063]
Remarks:

ISOCANDELA DIAGRAM

Test:U:221.70V I:0.2320A P:49.900W PF:0.9710 Freq:50.00Hz		
Lamp Flux:5621.73x1 lm		
Name: NS10-φ214mm-50W	Type: LED	
MFR.: Lumega Group	DIM.: D214*H110mm	
	SUR.: D180mm	



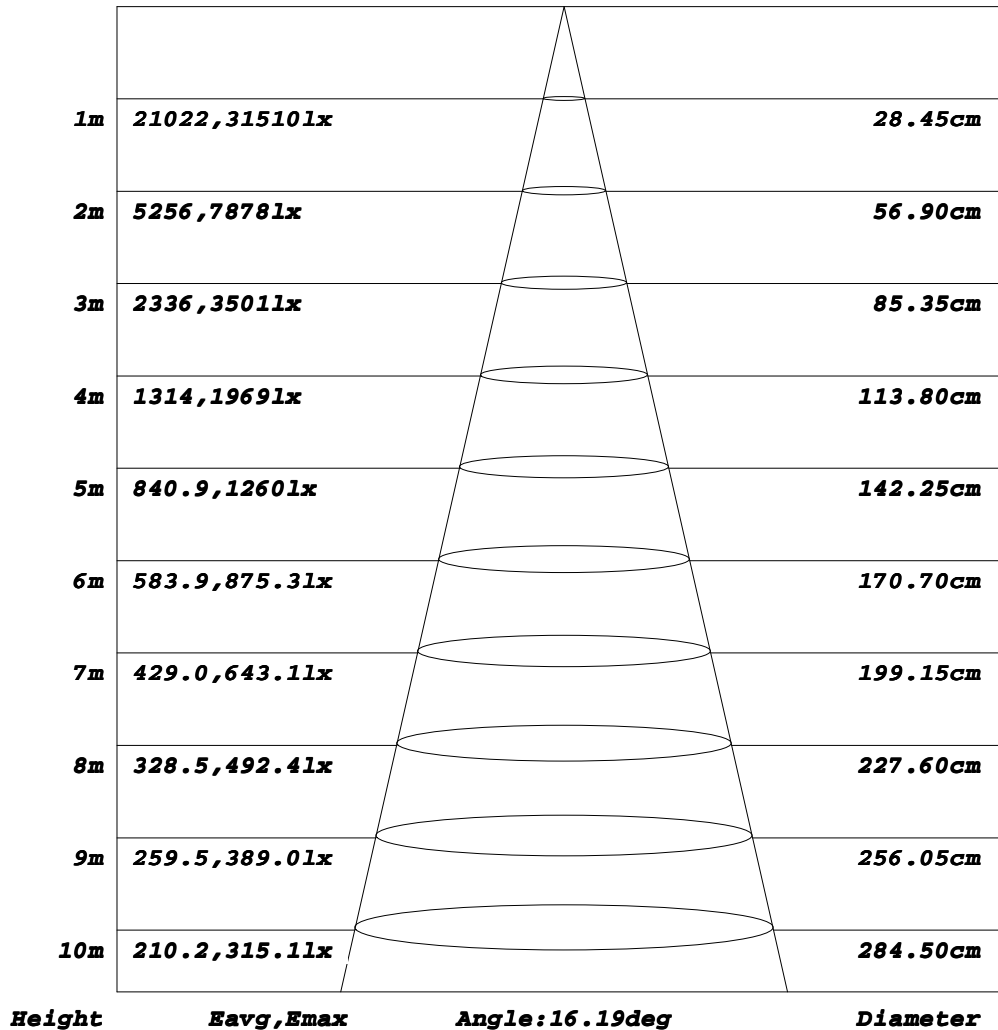
C Range: 0 - 360DEG
C Interval: 30.0DEG
Test Speed: HIGH
Temperature: 25.3DEG
Operators: DAMIN
Test Date: 2022-05-04

γ Range: 0 - 180DEG
γ Interval: 1.0DEG
Test System: EVERFINE GO-2000A_V1 SYSTEM V2.00.443
Humidity: 65.0%
Test Distance: 8.000m [K=0.7063]
Remarks:

AAI Figure

Test:U:221.70V I:0.2320A P:49.900W PF:0.9710 Freq:50.00Hz		
Lamp Flux:5621.73x1 lm		
Name: NS10-φ214mm-50W	Type: LED	
MFR.: Lumega Group	DIM.: D214*H110mm	
	SUR.: D180mm	

Flux out:1657 lm



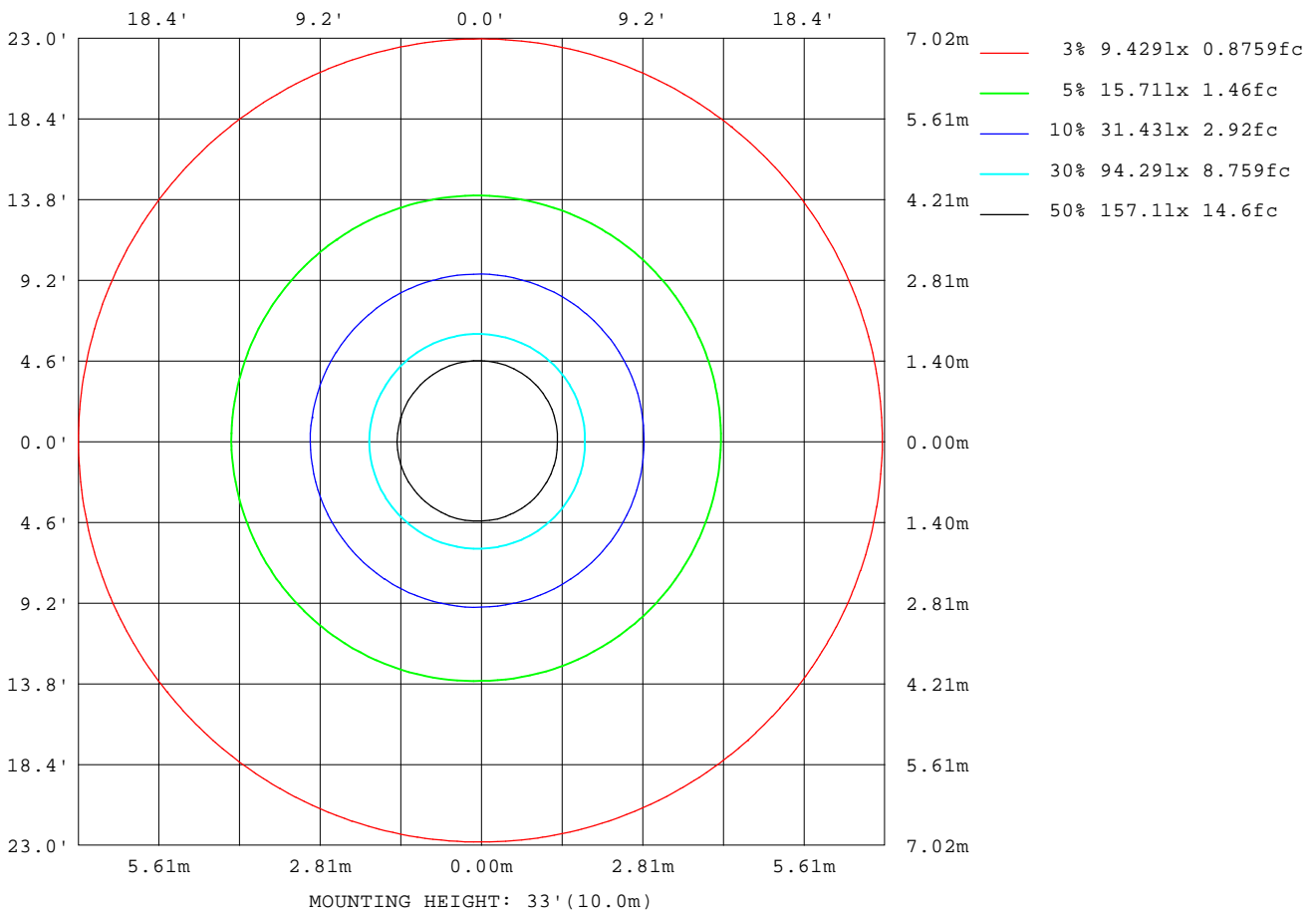
Note: The Curves indicate the illuminated area and the average illumination when the luminaire is at different distance.

C Range: 0 - 360DEG
C Interval: 30.0DEG
Test Speed: HIGH
Temperature: 25.3DEG
Operators: DAMIN
Test Date: 2022-05-04

γ Range: 0 - 180DEG
γ Interval: 1.0DEG
Test System: EVERFINE GO-2000A_V1 SYSTEM V2.00.443
Humidity: 65.0%
Test Distance: 8.000m [K=0.7063]
Remarks:

ISOLUX DIAGRAM

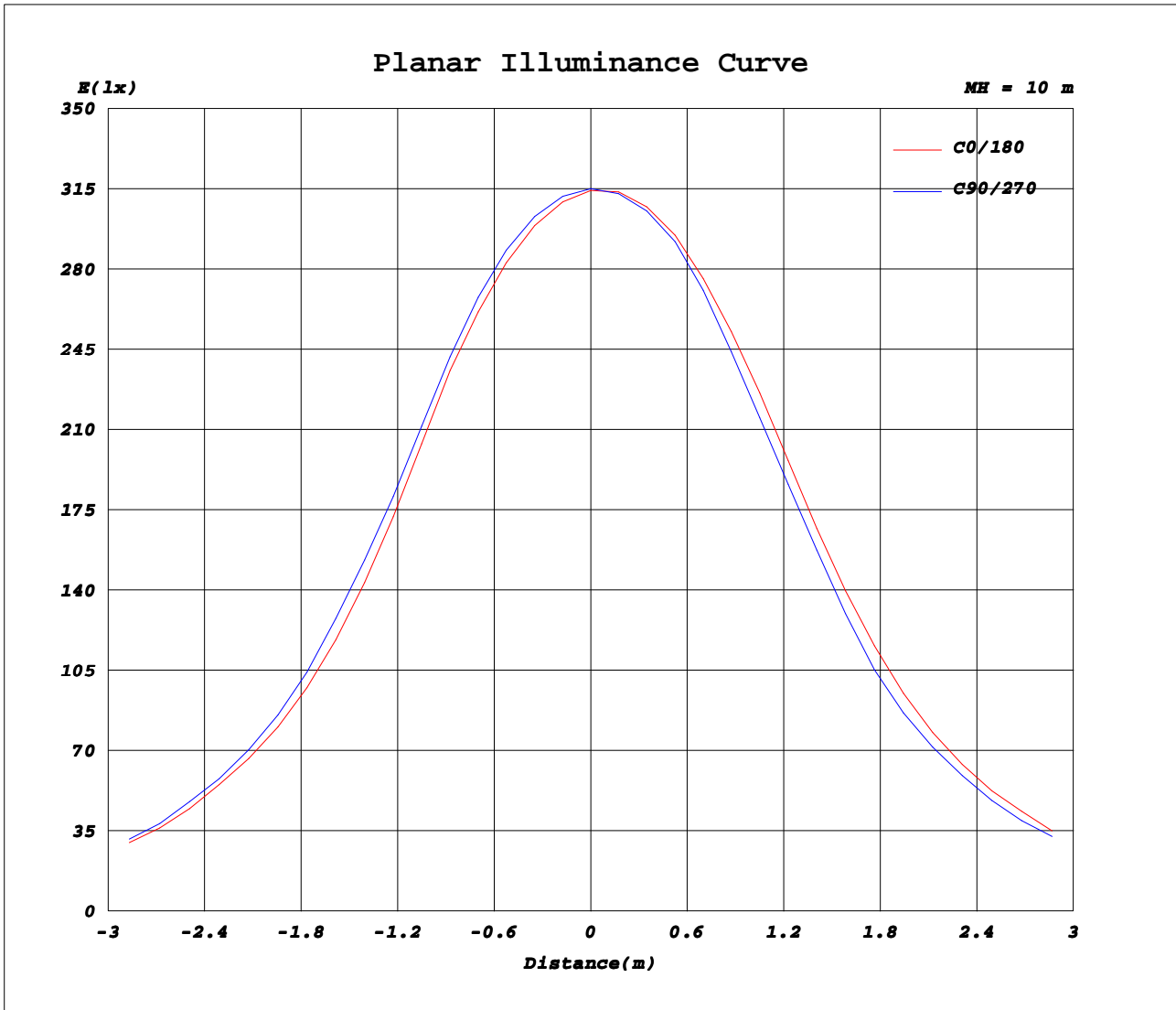
Test:U:221.70V I:0.2320A P:49.900W PF:0.9710 Freq:50.00Hz		
Lamp Flux:5621.73x1 lm		
Name: NS10-φ214mm-50W	Type: LED	
MFR.: Lumega Group	DIM.: D214*H110mm	
	SUR.: D180mm	



C Range: 0 - 360DEG
C Interval: 30.0DEG
Test Speed: HIGH
Temperature: 25.3DEG
Operators: DAMIN
Test Date: 2022-05-04

γ Range: 0 - 180DEG
γ Interval: 1.0DEG
Test System: EVERFINE GO-2000A_V1 SYSTEM V2.00.443
Humidity: 65.0%
Test Distance: 8.000m [K=0.7063]
Remarks:

Planar Illuminance Curve



C Range: 0 - 360DEG
C Interval: 30.0DEG
Test Speed: HIGH
Temperature: 25.3DEG
Operators: DAMIN
Test Date: 2022-05-04

γ Range: 0 - 180DEG
γ Interval: 1.0DEG
Test System: EVERFINE GO-2000A_V1 SYSTEM V2.00.443
Humidity: 65.0%
Test Distance: 8.000m [K=0.7063]
Remarks:

LUMINOUS DISTRIBUTION INTENSITY DATA

Test:U:221.70V I:0.2320A P:49.900W PF:0.9710 Freq:50.00Hz Lamp Flux:5621.73x1 lm		
Name: NS10-φ214mm-50W	Type: LED	
MFR.: Lumega Group	DIM.: D214*H110mm	
	SUR.: D180mm	

Table--1

UNIT: x10cd

C(DEG) γ (DEG)	0	30	60	90	120	150	180	210	240	270	300	330							
0	3143	3147	3150	3151	3149	3145	3143	3145	3149	3151	3150	3147							
5	2385	2400	2420	2446	2490	2530	2557	2539	2507	2468	2439	2412							
10	1020	1039	1062	1092	1140	1183	1212	1188	1149	1103	1072	1045							
15	403	406	412	424	447	469	484	475	458	438	425	414							
20	218	217	217	219	224	230	234	234	232	228	225	222							
25	193	192	191	192	194	197	199	199	198	196	195	194							
30	182	181	181	181	182	184	185	185	185	184	183	182							
35	171	170	170	170	171	171	172	172	172	171	171	171							
40	112	111	111	113	118	123	127	125	122	118	116	114							
45	9.74	10.0	10.9	12.3	14.9	17.5	19.7	20.3	20.0	18.7	16.6	13.6							
50	3.95	3.81	3.74	3.75	3.91	4.09	4.23	4.14	4.01	3.87	3.85	3.87							
55	3.81	3.70	3.65	3.64	3.74	3.85	3.95	3.94	3.90	3.85	3.83	3.82							
60	2.49	2.33	2.26	2.29	2.49	2.73	2.93	2.91	2.82	2.71	2.63	2.56							
65	1.67	1.51	1.44	1.44	1.57	1.74	1.89	1.90	1.88	1.83	1.78	1.73							
70	1.09	0.87	0.76	0.76	0.99	1.25	1.47	1.40	1.27	1.13	1.08	1.07							
75	0.14	0.09	0.09	0.14	0.30	0.48	0.63	0.69	0.70	0.65	0.53	0.37							
80	0.17	0.10	0.10	0.16	0.37	0.59	0.80	0.87	0.87	0.81	0.67	0.45							
85	0.19	0.11	0.11	0.19	0.43	0.69	0.93	1.01	1.01	0.93	0.77	0.52							
90	0.23	0.14	0.14	0.22	0.47	0.75	1.00	1.08	1.08	1.00	0.83	0.57							
95	0.29	0.20	0.20	0.28	0.53	0.80	1.04	1.13	1.13	1.04	0.87	0.62							
100	0.40	0.31	0.30	0.38	0.62	0.88	1.12	1.19	1.19	1.11	0.95	0.71							
105	0.58	0.49	0.48	0.55	0.77	1.02	1.24	1.32	1.32	1.24	1.10	0.88							
110	0.87	0.79	0.78	0.84	1.04	1.27	1.47	1.54	1.54	1.48	1.34	1.14							
115	1.23	1.14	1.13	1.19	1.39	1.61	1.82	1.89	1.90	1.83	1.70	1.50							
120	1.58	1.48	1.46	1.54	1.77	2.04	2.28	2.36	2.36	2.28	2.13	1.89							
125	1.92	1.81	1.80	1.88	2.14	2.43	2.69	2.78	2.79	2.70	2.53	2.27							
130	2.40	2.29	2.28	2.34	2.57	2.82	3.05	3.13	3.13	3.05	2.90	2.69							
135	3.07	2.98	2.95	2.99	3.13	3.30	3.46	3.51	3.51	3.46	3.37	3.25							
140	3.89	3.81	3.78	3.80	3.90	4.02	4.13	4.15	4.15	4.11	4.06	3.99							
145	4.67	4.61	4.59	4.60	4.68	4.77	4.86	4.89	4.89	4.87	4.83	4.76							
150	5.39	5.34	5.32	5.34	5.43	5.54	5.63	5.64	5.63	5.60	5.55	5.48							
155	6.01	5.99	6.00	6.04	6.12	6.21	6.29	6.32	6.31	6.28	6.22	6.13							
160	6.43	6.44	6.47	6.53	6.63	6.74	6.83	6.86	6.86	6.81	6.72	6.60							
165	6.25	6.29	6.36	6.45	6.60	6.74	6.87	6.94	6.95	6.90	6.76	6.54							
170	5.25	5.37	5.49	5.60	5.73	5.84	5.93	5.99	5.99	5.94	5.78	5.56							
175	4.52	4.53	4.56	4.61	4.70	4.79	4.87	4.90	4.89	4.85	4.77	4.66							
180	4.39	4.35	4.33	4.32	4.35	4.38	4.41	4.38	4.35	4.32	4.32	4.35							

C Range: 0 - 360DEG
C Interval: 30.0DEG
Test Speed: HIGH
Temperature:25.3DEG
Operators:DAMIN
Test Date:2022-05-04

γ Range: 0 - 180DEG
γ Interval: 1.0DEG
Test System:EVERFINE GO-2000A_V1 SYSTEM V2.00.443
Humidity:65.0%
Test Distance:8.000m [K=0.7063]
Remarks: